

BRIFEN★USA INC.

WIRE ROPE SAFETY FENCE

ASSEMBLE TOOL

STEP 1—Connect hydraulic hose from Spreader Tool to either the ENERPAC Hydraulic Pump (Part# T-28) or the ENERPAC Manual Pump (Part# T-20).



Part# T-28

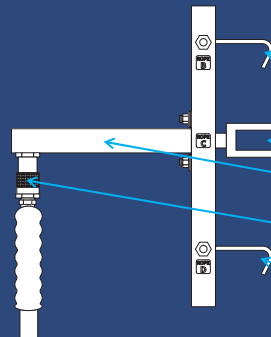
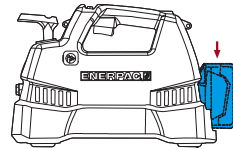
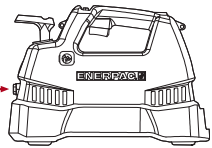
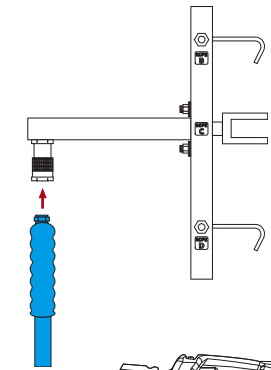


Part# T-20

STEP 2—If using the ENERPAC Hydraulic Pump, insert a charged Lithium-Ion battery as show.



Only use Enerpac Premium HF Blue 150 Hydraulic Oil when needed.



Hook for Rope B

Hook for Rope C

Hydraulic Cylinder

Hydraulic Hose Hookup to Tool

Hook for Rope D

Safety Switch

Directional Control Valve

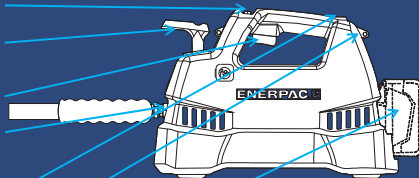
Engage Switch

Hydraulic Hose Hookup from Tool

Oil Fill (HF Blue 150)

Shoulder Strap Connection

Lithium Battery



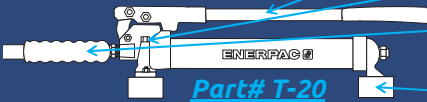
Part# T-28

Pump Handle

Release Knob

Hydraulic Hose Hookup from tool

Mounting Hooks for Ropes



Part# T-20

INCLUDED WITH TOOL:

Hydraulic Pump Option (T-28)—

ENERPAC Hydraulic Pump
Lithium-Ion Battery (28-Volt)
Battery Charger
Hydraulic Hose
Spreader Tool

Manual Pump Option (T-20)—

ENERPAC Manual Pump
Hydraulic Hose
Spreader Tool

BRIFEN★USA INC.

12501 N Santa Fe Ave.
Oklahoma City, OK 73114

Phone: 405-751-8062
Toll Free: 1-866-427-4336
www.brifenus.com

Spreader Tool

QUICKSTART GUIDE

MODEL # T-2X
REV. OCTOBER 2020



Scan QR Code For Video

INTRODUCTION TO THE

Spreader Tool



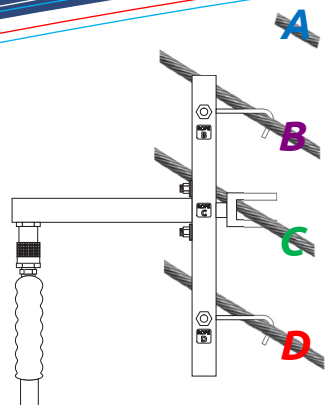
IMPORTANT:

User should first read through entire product manual before Proceeding. For maintenance and care of either the Manual Pump (T-20) or Hydraulic Pump (T-28) please refer to the included manuals.



Safe & Easy

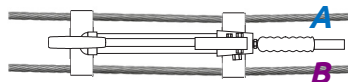
Repairing Brifen USA High Tension Cable Barriers just became a whole lot easier and safer thanks to this new spreader tool which works with both our NCHRP 350 TL4 and MASH O Post systems. It is available in two versions. The hand pump option is light weight and small enough to carry in any work truck. The battery powered option utilizes an Enerpac high pressure cordless battery powered hydraulic pump ideal for jobs that require a combination of portability, speed, and safety. These cordless units are perfect for high frequency and/or high quantity post replacement repairs, cutting down on crew fatigue and improving safety. The Lithium-Ion battery provides superior run time, even under extreme job site conditions.



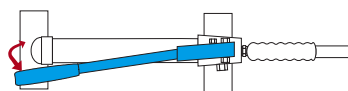
ATTATCH TOOL TO WIRE ROPE

STEP 1—Place the Spreader Tool on Ropes B, C and D, as shown.
Do not attach to Rope A

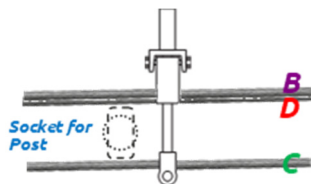
ENGAGE THE TOOL (Manual Pump Only)



STEP 1— Hang manual pump on Ropes using mounting hooks.



STEP 2— Pump handle in and out to extend and spread Rope C outward.

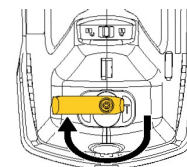


STEP 3— Slide Post from top between the ropes and into the socket.

STEP 3— Retract Tool by turning the Release Knob.

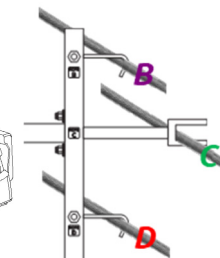
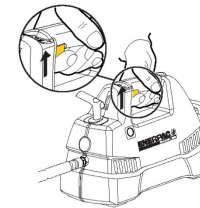
ENGAGE THE TOOL (Hydraulic Pump Only)

STEP 1— Switch off the Safety Switch

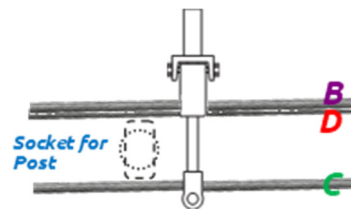


STEP 2— Turn Directional Control Valve Clockwise to the extend position.

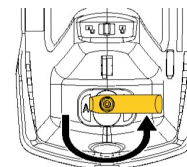
STEP 3— Extend Rope C outwards by pulling the engage switch. Release when desired width is reached.



STEP 4— Slide Post from top between the ropes and into the socket.



STEP 5— Turn Directional Control Valve Counter-Clockwise to retract the spreader tool.



STEP 6— Tool can now be unhooked from all ropes and removed.

BRIFEN★USA INC.
WIRE ROPE SAFETY FENCE

*Because Our Families
Drive Where You Do*